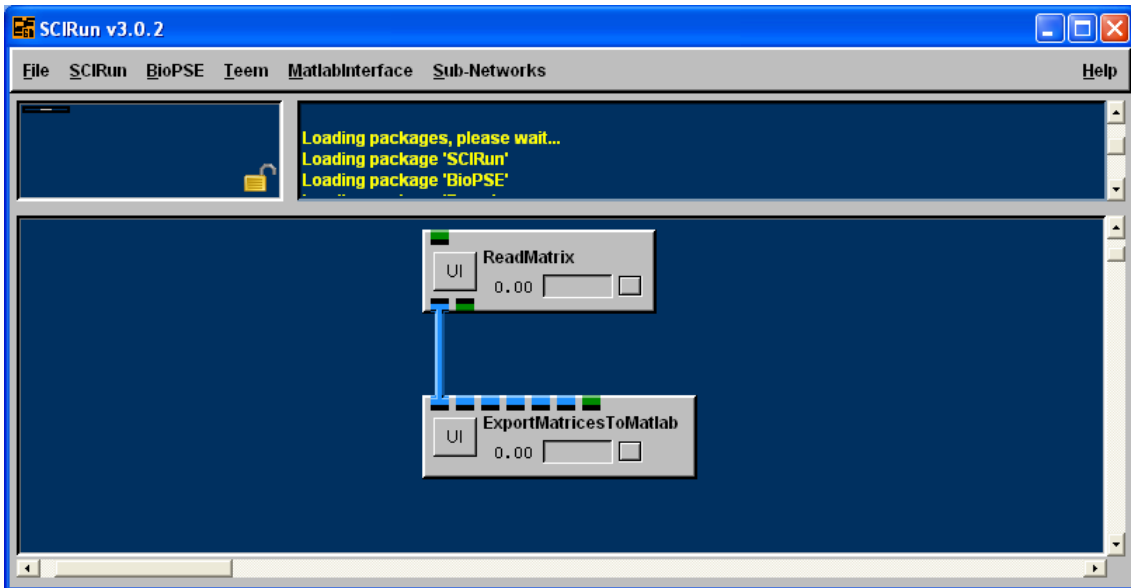


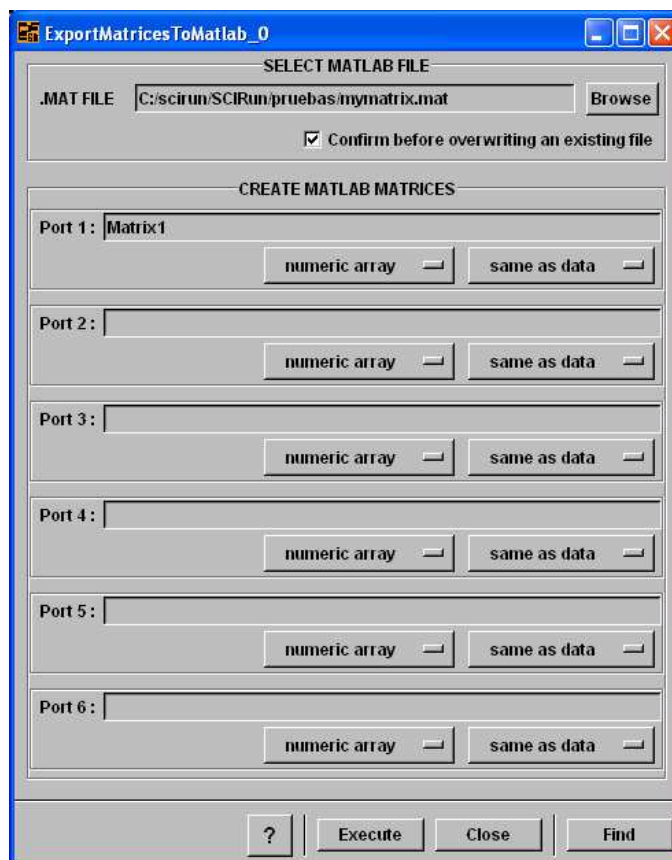
Hi all,

I'm trying to translate SCIRun Matrix to MATLAB .mat files. I've done a very simple network:

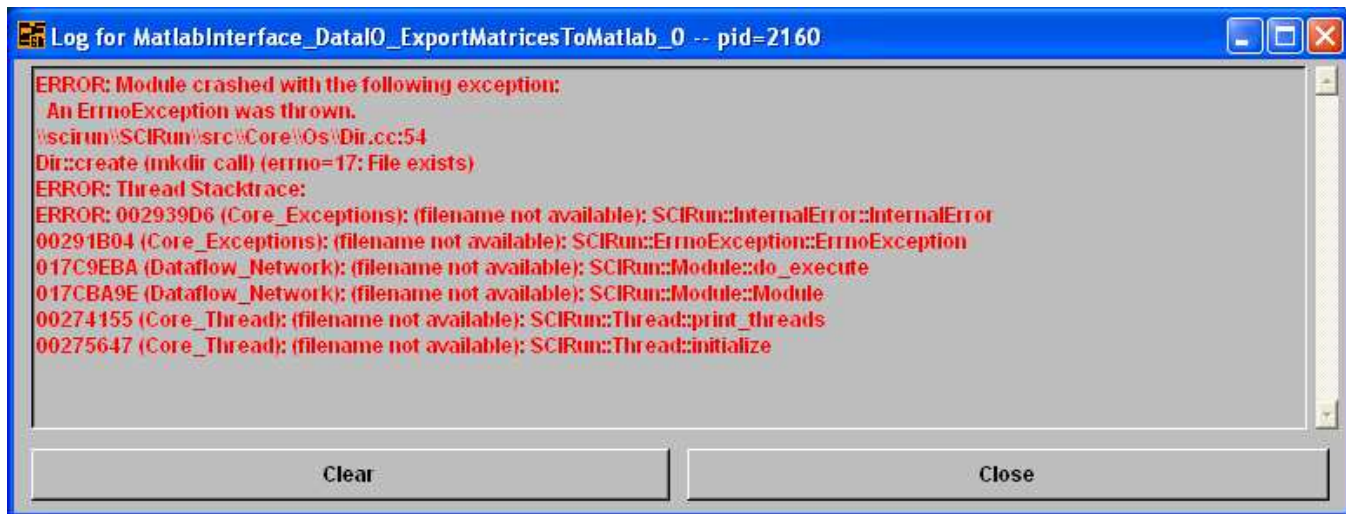


I have load the SCIRun matrix '**for_mat_128.mat**', that is in SCIRunData\time-dependent.

This is ExportMatricestoMatlab module:



But when I click “Execute all” I have an error:



What can I do? I’m interested on the format of ‘for_mat_128.mat’ and other SCIRun matrices.

Thanks all,
Lydia